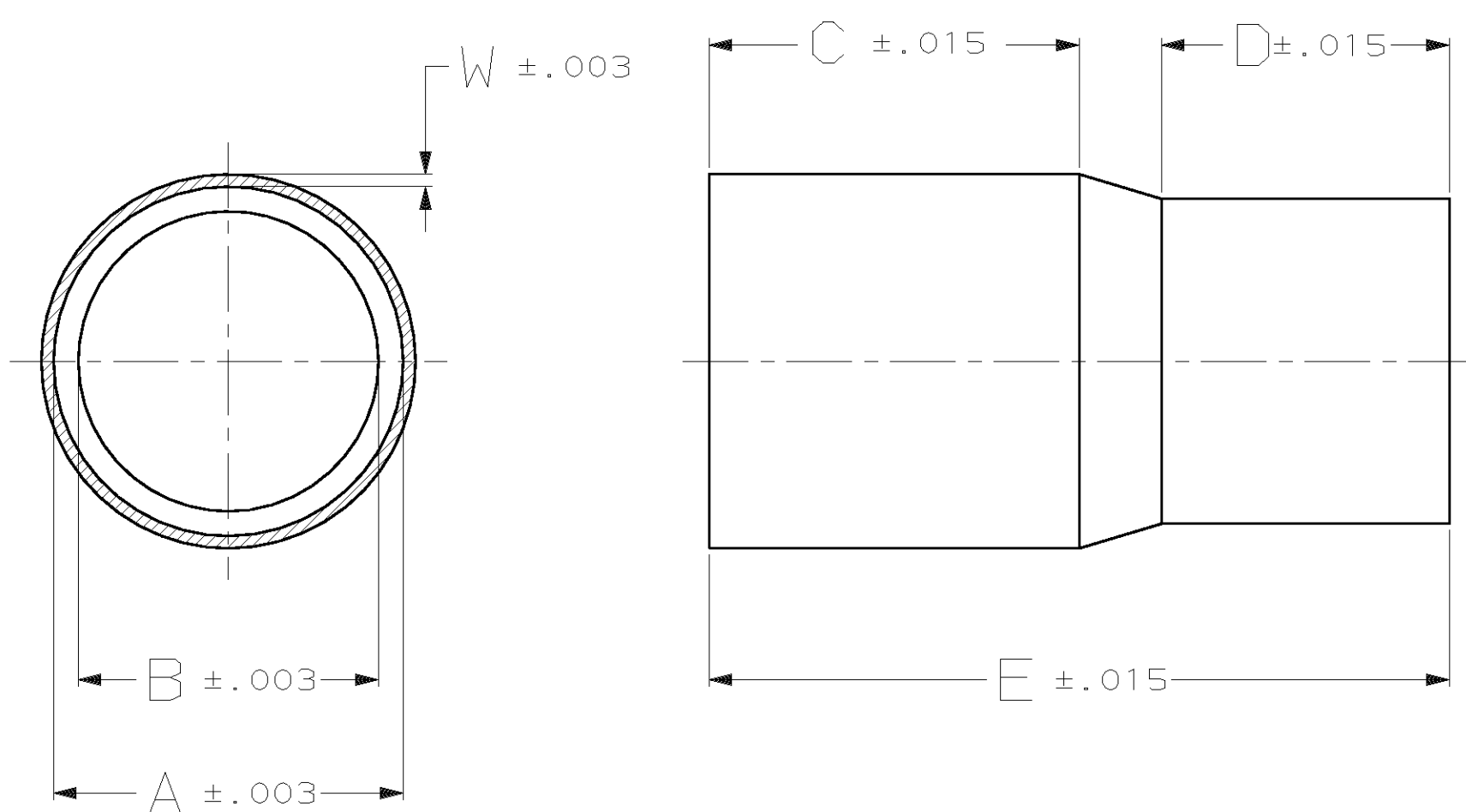


LOC	DIST	P	F	ZONE	LTR	DESCRIPTION	DATE	APPD
AD	39				J	REV PER 063C-0546-04	220CT04	JR/DR



- HARDNESS VALUE SHOULD BE 80 DPH MAX (AVG OF 3 READINGS) USING A 100 GRAM LOAD.
- OBSELETE PART NUMBER.
- FINISH: .000100 MIN BRIGHT TIN-LEAD
- FINISH: .000100 MIN TIN

4	.900	.250	.550	.023	.525	.600	5-102903-8
4	.900	.250	.550	.023	.550	.600	5-102903-7
4	.900	.250	.550	.023	.425	.525	5-102903-6
4	.900	.250	.550	.023	.465	.525	5-102903-5
4	.900	.250	.550	.023	.365	.460	5-102903-4
4	.900	.350	.450	.023	.250	.425	5-102903-3
4	.900	.350	.450	.023	.300	.425	5-102903-2
4	.900	.350	.450	.023	.365	.425	5-102903-1
3	.900	.250	.550	.023	.525	.600	3-102903-6
3	.900	.250	.550	.023	.550	.600	3-102903-3
3	.900	.250	.550	.023	.425	.525	3-102903-0
3	.900	.250	.550	.023	.465	.525	2-102903-7
3	.900	.250	.550	.023	.365	.460	2-102903-4
2	.900	.250	.550	.023	.425	.460	2-102903-1
2	.460	.150	.260	.015	.195	.265	1-102903-8
3	.900	.350	.450	.023	.250	.425	1-102903-5
2	.900	.250	.550	.023	.265	.425	1-102903-2
3	.900	.350	.450	.023	.300	.425	102903-9
2	.900	.250	.550	.023	.325	.425	102903-6
3	.900	.350	.450	.023	.365	.425	102903-3
FINISH	E	D	C	W (WALL THK.)	B (INSIDE DIA)	A (INSIDE DIA)	PART NUMBER

DO NOT SCALE PRINT. UNLESS SPECIFIED DIMENSIONS IN mm [INCHES] TOLERANCES ON : 2 PLC DEC ± - 3 PLC DEC ± .010 ANGLES ± -		DR 12/15/92 E. BRANDBERG		AMP Incorporated Harrisburg, PA 17105-3608	
MATERIAL SOFT COPPER		CHK 1-20-93 J. GESFORD			
FINISH SEE TABLE		APPD 1-20-93 D. DUPLER		NAME FERRULE, STEP DOWN	
		APPD 1-20-93 D. DUPLER		SIZE C	
		PRODUCT SPEC -		CAGE CODE 00779	
		APPLICATION SPEC -		DRAWING NO C=102903	
		WEIGHT -		SCALE -	
				SHEET 1 OF 1	

THIS DRAWING IS A CONTROLLED DOCUMENT FOR AMP INCORPORATED. IT IS SUBJECT TO CHANGE AND THE CONTROLLING ENGINEERING ORGANIZATION SHOULD BE CONTACTED FOR THE LATEST REVISION.